

The Scout Guard KG680V is built on the architecture of the successful SG550V model camera. It is however configured with a more conventional rear opening door providing easy access to an LCD screen, navigation buttons, memory card slot and battery bay. This weatherproof housing measures just 140 X 102 X 74 mm, and is supplied with an adjustable tree strap and tripod mounting thread.



Images by day are recorded in full colour, reverting to monochrome at night by way of a 28 LED infrared illuminator array. Image resolution has been increased to 8 megapixels for still photos and 720 X 480 pixels for video. SDHC memory cards of up to 16 MB can be used with this camera enabling over 1000 photos or more than 10 hours of video recording. Shutter response is a rapid 0.8 to 1.2 seconds.

The KG680V is fitted with a 5 cm colour viewing screen. This has three functions: It can be used as a live view screen to assist in framing scenes. It also displays menu functions during set up phase. Thirdly the screen is used to review recorded still and video images in the field.

Either four or eight alkaline, lithium or rechargeable NiMH batteries can be used.



Alternatively an external 6 volt power source can be used.

As with all cameras sold by Faunatech, we provide an unrivalled post sale service and backup. The KG680V is likewise covered by our 12 month repair/replacement warranty.



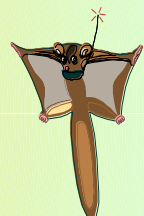
FAUNATECH / AUSTBAT

P O B o x 1655 Bairnsdale 3875 Victoria Australia

Tel: +61 3 51579001 Fax: +61 3 51579002

goodgear@faunatech.com.au

www.faunatech.com



Scout Guard KG680V Specifications

Image sensor	Color CMOS sensor
Still picture resolution	3 megapixels (2048 X 1536 pixels) 5 megapixels (2560 X 1920 pixels) 8 megapixels (3264 X 2448 pixels)
Video resolution	320 x 240 pixels @ 30FPS 640 x 480 pixels @ 30 FPS 720 x 480 pixels @ 30 FPS
Video length	5 to 60 seconds, programmable
Lens	F=3.1mm FOV (Field of View) = 50° Auto IR cut-filter
Trigger response time	1.0 seconds
Forced delay post photo	5 seconds to 60 minutes
Forced photos per trigger	1, 2 or 3 photos
IR flash range	12 ~ 15 metres
LCD Display	50 mm (2.0") displays live view, menu options or recorded images
Manual recording	Still or video, via remote control unit
Memory	Internal 32 MB, or external 16 GB SDHC memory card
Sensor type	Multi zone PIR
PIR sensitivity	Adjustable (High/Normal/Low)
PIR range	15 metres
Data recorded on image	Date and time (hh:mm:ss)
External power supply	6 volt DC
Battery requirement	4 X AA or 8 X AA , Alkaline, Lithium or rechargeable NiMH
Power consumption	< 0.3mA (standby) / 200mA (record) / 530mA (record with IR on)
Walk test indication	Red LED indicator
Low battery indication	Blue LED indicator
Included accessories	TV out cable USB cable Mounting strap Manual
Peripheral jacks	USB TV out (PAL or NTSC) SD card slot External power
Mounting options	Webbing strap Standard tripod thread
Dimensions	140 X 102 X 74 mm
Weight	300 grams c/w 4 X AA batteries
Operating humidity range	5% - 90%
Operating temperature range	-20 to + 60° centigrade
Warranty	12 months, provided by Faunatech